
SH Series Multi function coiler with torsion

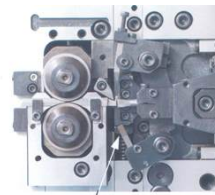
<http://www.whitelegg.com/product-search/sh-series-multi-function-coiler-with-torsion>

Designed with ease of use this single point spring coiling machine with very versatile torsion attachment allow for very accurate and extreme high speed forming applications. Very versatile coiling and bending possibilities

- Windows based operation for ease of programming
- Single coiling point
- Torsion attachment
- Initial servo tension

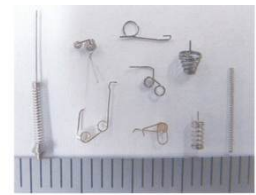
- A variety of sensors and gauges and measuring devices available
- Model SH-3 has a wire range 0.08-0.3 mm. With Ultra fine tooling the wire range is extended down to 0.03 mm. Maximum OD 10 mm
- Model SH-8 has a wire range 0.1-0.8 mm. With Ultra fine tooling the wire range is extended down to 0.03 mm. Maximum OD 20 mm
- Very versatle torsion attachment

- Smaller model available for the wire range 0.08 - 0.3 mm
- Ideal for magazine and torsion spring production
- <https://www.youtube.com/watch?v=xaPan3CAwVM>
- <https://www.youtube.com/watch?v=JKtN3O8D4F4>

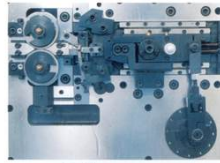


Assist Tool

Applying an assist tool and a cutting tool symmetrically expands work range and gives speedup of production

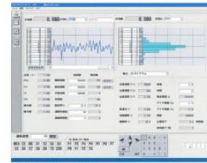


Torsion spring parts formed on SH-311



Coiling area

Simple designed front plate with newly developed crank mechanism for torsion spring and initial tension servo placed behind the front plate.



Production management

Real time display for Line chart, Histogram, Standard deviation, Production capability, Production quantity, Speed, remaining amount of wire material and so on.